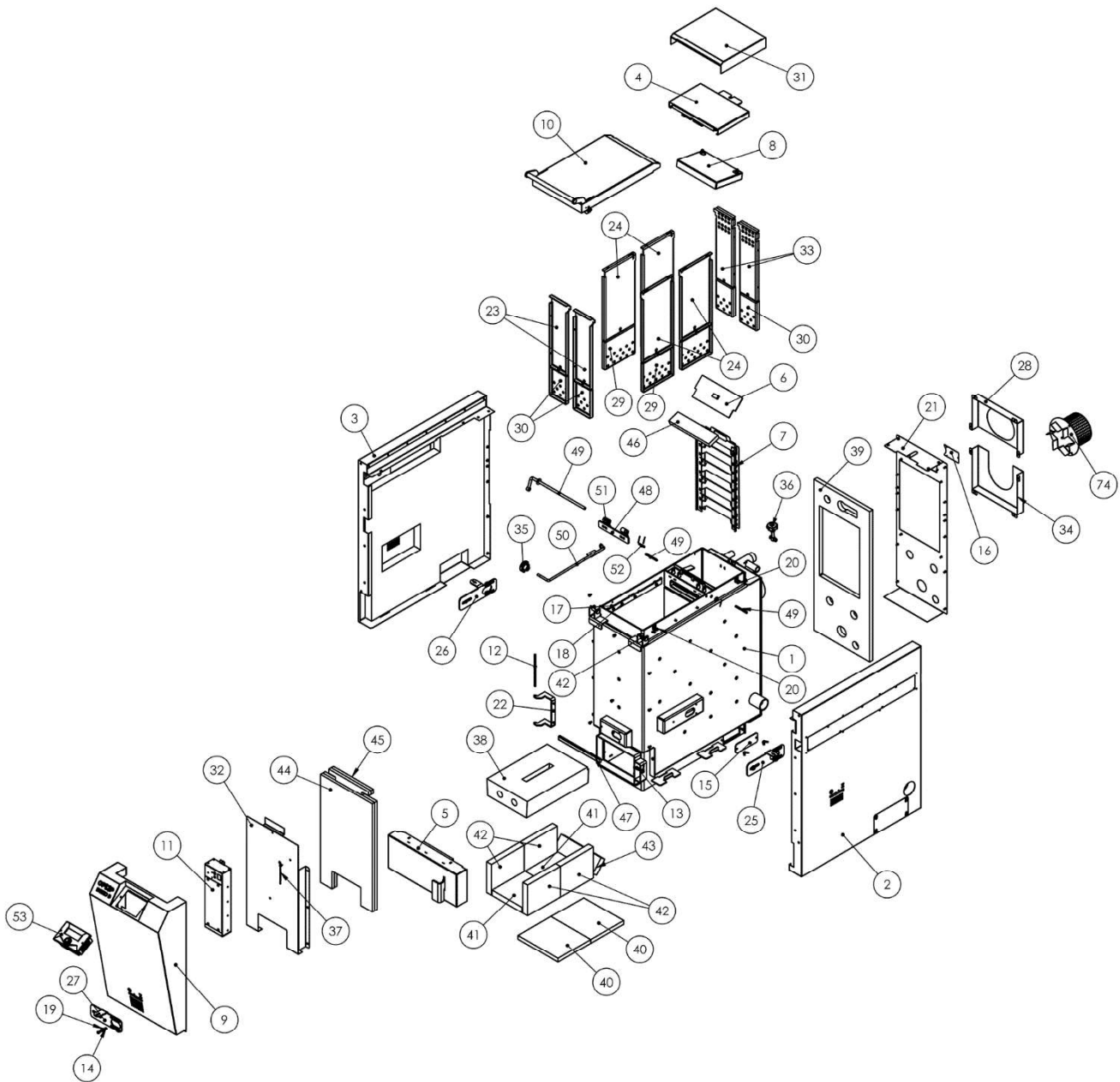


5. LISTE ERSATZTEILE

Die vollständige Explosionszeichnung aller Kessel der Serie H4xx-D finden Sie unten. Verwenden Sie diese Liste, um die Teile des Kessels zu identifizieren, wenn Sie sie bestellen oder austauschen wollen.



Item no.	Part no.	Part name	Amount
1	573369	Boiler weldment H416 EKO D	1
2	7001728	Right side cover assembly	1
3	7001729	Left side cover assembly	1
4	7001731	Cleaning doors assembly	1
5	7001734	Ash doors assembly	1
6	7001735	Filling chambre flap	1
7	7001770	Turbulator set	1
8	7001793	Heat exchanger insulation assembly	1
9	7001875	Front cover assembly	1
10	7001876	Assembly of the filling door	1
11	7001889	Electronics Box H4EKO D	1
12	214366	Peg	1
13	295616	Peg H4 Eko	1
14	295864	Spacer	9
15	3632502	Caps for cleaning holes	2
16	3632503	Cover	1
17	3632561	Spacer	6
18	3632562	Hinge belt II	2
19	3632629	Spacer 6,4	9
20	3651040	Upper clip	4
21	3653726	Back cover	1
22	3653813	Hinge of the ashtray door	1
23	3653829	Filling shaft cover I	2
24	3653830	Filling shaft cover II	4
25	3653839	Mobile Sheet	1
27	3653840	Mobile Sheet I	1
28	3653846	Exhaust fan box	1
29	3653850	Subdividing plate with air vents	4
30	3653851	Subdividing plate with air vents	4
31	3653912	Cover plate of the cleaning door	1
32	3653933	Sheet for holding the electronics	1
33	3653945	Filling shaft cover III	2
34	3653946	Exhaust fan box II	1
35	K0154.510	Handwheel, nut (VCT.50 B-M8-C2)	1
36	K0053.10075_49	Set of closing mechanism for cleaning doors	1
37	PT-303	Cabling tape	1
38	374224	Nozzle	1
39	577715	Rear insulation	1
40	577701	Bottom insulation	2
41	577776	Bottom schamott	2
42	577731	Side schamott	4
43	577740	Heat exchanger schamott	1
44	577766	Insulation front	2
45	577771	Izobrex for filling door	2
46	577772	Isolation inside	1
47	-	Isolation of the filling door 20x10 (l = 256mm)	1
48	7001903	Movable flap assembly	1
49	7001904	Lever of the flap-S	1
50	7001905	Flap bar	1
51	7001906	Rotary handle assembly	2
52	čep	B-6x35 ISO 2340	2
53	Control unit	OPOP H4-D	1